

Research Article

Primary African American Endothelial Cells Exhibit Endothelial Dysfunction with an Exacerbated Inflammatory Profile and Blunted MMP-2 Activity

Marc D. Cook^{1,7,*}, Chenyi Ling², Heather Grimm³, Adelola Adeyemo⁶, Maitha Aldokhayyil⁴, Kevin Heffernan⁶, Bo Fernhall⁷, Michael Brown^{4,7}

¹Department of Kinesiology, North Carolina Agricultural and Technical State University, Greensboro, NC, USA

²Department of Biology, University of Alaska, Fairbanks, AK, USA

³Department of Exercise Science, Kings College, Wilkes-Barre, PA, USA

⁴School of Kinesiology, Auburn University, Auburn, AL, USA

⁵School of Medicine-Geriatrics, University of Utah, Salt Lake City, UT, USA

⁶Department of Exercise Science, Syracuse University, Syracuse, NY, USA

⁷Department of Kinesiology and Nutrition, University of Illinois at Chicago, Chicago, IL, USA

ARTICLE INFO

Article History

Received 26 February 2020

Accepted 03 November 2020

Keywords

Endothelial dysfunction
hypertension
inflammation
matrix metalloproteinase-2
racial difference

ABSTRACT

Endothelial dysfunction is associated with the racial health disparity in vascular dysfunction in African Americans (AAs). Matrix Metalloproteinase (MMP)-2 is constitutively expressed in endothelial cells (EC) and is a biomarker that has been associated with hypertension, as its properties are involved in pathologic oxidative stress and pro-inflammation that may affect vascular homeostasis. *Herein*, we report significant inverse relationships between MMP-2, stroke volume, carotid and aortic systolic pressures in a small cohort of young AA men. In the current study, we postulated that basal activation in AA Endothelial Cells (EC) may include different responses in MMP-2 activity, compared to Caucasian (CA). We evaluated gene and protein expression and activity of MMP-2, and related peptides, in multiple different primary Human Umbilical Vein Endothelial Cells (HUVEC) isolated from four different AA and CA donors. Compared to CA, AA HUVEC exhibited greater basal MMP-2, MMP-14, Tissue inhibitor of metalloproteinase-2, Vascular cell adhesion molecule-1, Intracellular adhesion molecule-1, and Interleukin (IL)-1 β gene expression and greater endothelin-1 secretion ($p < 0.05$). Interestingly, basal MMP-2 protein expression was greater while relative secreted MMP-2 activity was lower ($p = 0.041$). Inflammatory stimuli (tumor necrosis factor- α) exacerbated relative MMP-2 activity in AA HUVEC ($p = 0.007$). These *in vitro* data offer insights into a potential mechanism involving primary endothelial cell inflammatory mediated MMP-2 activities that may contribute to poorer vascular outcomes. Further studies are necessary to investigate endothelial intracellular transcriptional, translational, and activity regulation of MMP-2.

© 2020 Association for Research into Arterial Structure and Physiology. Publishing services by Atlantis Press International B.V. This is an open access article distributed under the CC BY-NC 4.0 license (<http://creativecommons.org/licenses/by-nc/4.0/>).

1. INTRODUCTION

African American (AA) race is an independent risk factor for vascular disease (e.g., hypertension) [1,2]. Hypertension disproportionately affects AAs, regardless of admixture [3], coupled with increased severity of hypertension and nearly a twofold increase in mortality associated with cardiovascular disease [4], thus revealing the epidemiological racial disparity and public health impact regarding hypertension [5,6]. Therefore, investigations are necessary to understand potential mechanism(s) that ultimately lead to premature and exacerbated hypertension-related cardiovascular diseases (e.g., stroke, kidney disease, hypertensive neuropathy, heart dysfunction) and end-organ failure in AA.

*Corresponding author. Email: mdcook@ncat.edu

Peer review under responsibility of the Association for Research into Arterial Structure and Physiology

Data availability statement: The data used to support the findings of this study are available from the corresponding author upon request.

Endothelial Dysfunction (EnDy), which can precede hypertension, has been shown to be greater in AA [7,8]. EnDy is characterized by a chronic low-grade inflammatory state of the endothelium and is marked by an exacerbated immune and oxidative stress response to inflammation. *In vitro*, Kalinowski et al. [1] showed that AA Human Umbilical Vein Endothelial Cells (HUVEC) exhibit EnDy marked by increased oxidative stress (e.g., superoxide and peroxynitrite production; Reactive Oxygen Species (ROS) and consequent reduced nitric oxide (NOx) bioavailability). Studies have previously shown that AA had significantly greater ROS *in vitro* and *in vivo* [9,10], and had greater circulating inflammatory endothelial microparticles (a novel biomarker of EnDy) [11,12]. One mechanistic explanation of these *in vitro* observations was that AA Endothelial Cells (EC) exhibited greater expression of nicotinamide adenine dinucleotide phosphate (NADPH) oxidase, increased basal inflammation, and lower antioxidant capacity [9] compared to Caucasian (CA) HUVEC that significantly improved in response to *in vitro* exercise mimetic (i.e., laminar shear stress)

[13,14]. Heightened ROS is a potent secondary messenger that initiates a cascade of dysfunctional activities of other proteins. Therefore, this profile in AA HUVEC provoked our examination of Matrix Metalloproteinase (MMP)-2 expression and activity, which may be directly affected by ROS.

Matrix metalloproteinase-2, a biomarker associated with hypertension, is an enzyme that is constitutively expressed in EC and involved in chronic vascular disease processes [15,16]. Coutinho et al. [17] reported that MMP-2 may be a predictor of cardiovascular events in AA. MMP-2 activities can propagate EnDy by activating vasoactive pro-proteins, such as the potent vasoconstrictor pro-Endothelin (ET)-1 [18] and pro-Interleukin (IL)-1 β [19]. Due to greater reported ROS in AA [9,10], MMP-2 may have a role in the disproportionate inflammation witnessed in AA by acting on these cytosolic pro-proteins mentioned above. We previously reported that circulating levels of MMP-2 were slightly lower and resistant to change following resistance exercise training in young AA men [10]. With these differential responses, we hypothesized that MMP-2 might be associated with vascular measures in this group. Following a secondary analyses of data reported in Cook et al. [10], we observed moderate relationships between plasma MMP-2 and stroke volume, carotid and aortic Systolic Blood Pressure (SBP) in young AA men but not CA (reported herein). As EC are a source of MMP-2, we initiated an *in vitro* investigation in multiple individual primary AA and CA HUVEC to examine the extent of EnDy, MMP-2 expression and activity. Given previous reports of racial differences in EC, we hypothesized that MMP-2 expression and activity would be greater in AA HUVEC.

2. MATERIALS AND METHODS

2.1. *In vivo*: MMP-2 and Blood Pressure

2.1.1. Subject characteristics

Healthy young self-reported AA and Caucasian CA men, between 18 and 30 years old, were recruited at the University of Illinois at Urbana [10].

2.1.2. Blood measures

Matrix metalloproteinase-2 was measured in serum via Elisa (R&D Systems, Minneapolis, MN, USA) as previously shown [10]. Brachial BP (mmHg) was measured by an automated oscillometric cuff (HEM-907 XL; Omron, Shimane, Japan). Carotid and aortic pressures (mmHg) were calculated via applanation tonometry (Millar Instruments; Houston, TX, USA) and stroke volume (ml/min) via ultrasonography (SSD5500; Aloka, Tokyo, Japan) as previously reported by Heffernan et al. [20]. The study was approved by the University of Illinois at Urbana Institutional Review Board.

2.2. Endothelial Cell Culture and Experimental Conditions

Primary HUVEC lines isolated from self-reported AA ($n = 4$) and CA ($n = 4$), all different donors with both male and female gender evenly split within groups, were obtained from Lonza

(Walkersville, MD, USA) and cultured in parallel in the same manner as experiments previously performed and described [9,14]. Specific clinical characteristics of the donors are protected and only information about self-identified race/ethnicity, gender of the fetus, general health, and smoking status (none) was collected by Lonza. Cell cultures were grown to ~95% confluence in 100-mm tissue culture dishes in full EGM-2 media (Lonza). Both basal (control) and stimulated conditions [Tumor Necrosis Factor- α (TNF- α); 10 ng/ml], at 4 and 24 h, were performed in serum free media to avoid the measurement of MMPs present in fetal bovine serum. Although fetal bovine serum was excluded from culture medium, all other growth factors, antioxidants, and antibiotics were added to media from the EGM-2 bullet media kit. Experiments were performed in duplicate and carried out in passage 6 for each HUVEC line.

2.2.1. Ethical guidelines

Ethical concerns pertaining to human cell culture work are important and not overlooked. Lonza Walkersville, Inc. accepts tissue only if consent for research has been obtained. Audits are frequently conducted to ensure appropriate operational procedures, and compliance with the Protection of Human Subjects regulations, of consent processes and receipt of any de-identified demographic or medical history information from donors. The *in vitro* studies were deemed to be exempt by the University of Illinois at Chicago Institutional Review Board.

2.3. Zymography

In each experimental condition, zymography (secreted activity) was assessed following the protocol outlined by Ben-Yosef et al. [21]. Briefly, the supernatant of cultured cells was harvested and centrifuged at 12,000 RPM to remove any cellular debris. After, supernatant (500 μ l) was concentrated (20 \times) by centrifugation (Millipore – Amicon ultra 0.5 filter devices) and loaded onto Tris-Gly gelatin-containing gels. A 10 ng pro-MMP-2 (70–72 kDa; Abcam; Cambridge, MA, USA) and fully activated MMP-2 (58–62 kDa) standard was loaded on each gel for the evaluation of MMP-2 activity. Densitometric analyses of zymography was completed using the ImageJ software (NIH) to quantify MMP-2 activity in digested zones. Data are expressed as relative band intensity of active MMP-2-to-Pro-MMP-2 (mean \pm SEM). Representative zymograms blots are shown ($n = 4$, performed in duplicate).

2.4. Western Blotting

Culture dishes were harvested for protein analysis as previously described [9]. Protein from cell lysates were separated by NuPAGE (Bis-Tris) gels and transferred to PVDF membranes (Invitrogen), blocked with 5% nonfat dry milk dissolved in Tris-Buffered saline, and incubated overnight with primary antibodies at 4 $^{\circ}$ C. Immunoreactive proteins were detected by chemiluminescence with Thermo Scientific SuperSignal (Pierce Biotechnology; IL, USA). Primary antibodies included MMP-2 (D8N9Y) and housekeeping genes anti- β -actin, and anti- α -tubulin (Cell Signaling Technologies; Danvers, MA, USA). Densitometric analyses of protein was

completed using the ImageJ software (NIH). Band intensity of proteins were divided by the band intensity of their internal control for normalization. Data are expressed as relative protein expression (fold change Δ ; mean \pm SEM) and AA HUVEC data are compared to basal expression of CA HUVEC (referent control).

2.5. Reverse Transcriptase Qualitative Polymerase Chain Reaction

Reverse Transcriptase Qualitative Polymerase Chain Reaction (RT-qPCR) was performed to quantify the EC inflammatory activation profile of HUVEC under basal and TNF- α stimulated conditions. Total RNA was harvested from HUVECs using RNeasy Mini extraction kit (Qiagen; MD, USA), converted to cDNA using the Affinity Script cDNA synthesis kit (Agilent Technologies; Wilmington, DE), and RT-qPCR was performed for gene expression of MMP-2, MMP-14, Tissue Inhibitor of Metalloproteinase (TIMP)-2, Endothelial Nitric Oxide Synthase (eNOS), IL-1 β , Vascular Cell Adhesion Molecule (VCAM)-1, and Intracellular Adhesion Molecule (ICAM)-1. Rt-qPCR was performed using an Agilent Stratagene MX3005P machine and all PCR primers were purchased from Life Technologies utilizing Taqman[®] assays (Grand Island, NY, USA). Gene expression data are expressed as relative mRNA fold expression ($\Delta\Delta$ CT method) by normalizing values to housekeeping gene expression of GAPDH and basal expression in CA (referent group). $\Delta\Delta$ CT method is explained by Livak and Schmittgen [22].

2.6. Enzyme Linked Immunosorbent Assay

Enzyme linked immunosorbent assay colorimetric assay kits were used to measure ET-1 (Enzo Life Sciences; Farmingdale, NY, USA) and NOx (Abcam) in cell culture media of basal conditions (unstimulated for 24 h; $n = 4$). The NOx colorimetric kit measurement utilized nitrate/nitrite quantification via Griess Reagent. This method has been validated to reflect NOx in biological samples [23]. Assays were performed per manufacturer's instructions. Data are expressed for ET-1 in pmol/L and NOx in μ mol/L as mean \pm SEM with ET-1 intra/inter-assay CV of 8.9% and 5.9%, respectively, and <5% for NOx in the observed ranges.

2.7. Data Analysis

Statistical analysis includes descriptive statistics for *in vivo* and *in vitro* studies. *In vivo*, baseline measure analysis was performed using two-tailed *t*-tests between groups. One-way ANOVA analysis (within race and within experimental conditions), with Bonferroni pairwise comparisons, was performed to examine race and TNF- α interaction effects concerning gene and protein expression and MMP-2 activity. Within and between-HUVEC racial group analysis was performed using *t*-tests. Non-parametric statistical analysis (with Welch's correction or Kruskal–Wallis with Dunn's comparisons) was used when data were not normally distributed. Correlation analyses for *in vivo* data were performed using Pearson *r* and Spearman when not normally distributed (MMP-2/Aortic SBP AA data only). All statistical analyses were performed using SPSS version 21.0 (SPSS Inc.; Chicago, IL, USA) and GraphPad Prism 8.0 (La Jolla, CA, USA). Data are expressed as mean \pm SEM with a level of significance set at $p < 0.05$.

3. RESULTS

3.1. *In vivo*: Relationship between MMP-2 and Vascular Measures

Baseline subject characteristics for AA ($n = 13$) and CA ($n = 11$) men (age, body mass index, MMP-2 (ng/ml), stroke volume, carotid and aortic systolic BP) are reported in Table 1. A secondary analysis of blood and vascular measures revealed moderate but significant inverse correlations between circulating MMP-2 and stroke volume, carotid SBP, and aortic SBP in AA with no relationship in CA (Table 1). We questioned that naïve EC (i.e., HUVEC) may provide insight into differential MMP-2 expression between race and, therefore, initiated an *in vitro* investigation of EnDy and MMP-2 activity in primary AA and CA HUVEC.

3.2. Endothelial Dysfunction in AA EC

AA HUVEC ($n = 4$ different cell lines per group) exhibited EnDy observed by lower basal NOx production (CA: 11.09 ± 1.002 ; AA: $8.25 \pm 0.53 \mu$ mol/L, $p = 0.046$) (Figure 1A) and higher ET-1

Table 1 | Relationship between circulating MMP-2, stroke volume, and vascular pressures

	African American		Caucasian		<i>p</i>
	<i>n</i> = 13		<i>n</i> = 11		
Age (years)	22.1 \pm 0.512**		27.0 \pm 1.07		0.0002
Body Mass Index (BMI)	29.3 \pm 1.20		29.5 \pm 1.18		0.913
MMP-2 (ng/ml)	231.8 \pm 10.68		229.4 \pm 23.89		0.921
Stroke volume (ml/beat)	111.5 \pm 4.99		112.6 \pm 5.98		0.891
Carotid SBP (mmHg)	128.7 \pm 2.89		122.2 \pm 3.67		0.166
Aortic SBP (mmHg)	113.1 \pm 2.41		109 \pm 2.58		0.288
MMP-2 (ng/ml)	<i>r</i>	<i>p</i>	<i>r</i>	<i>p</i>	
Stroke volume (ml/beat)	-0.558	0.047*	-0.2172	0.521	
Carotid SBP (mmHg)	-0.555	0.050*	0.07738	0.821	
Aortic SBP (mmHg)	-0.601	0.023*	0.4097	0.210	

Data are reported as average \pm SEM. Pearson *r*-values with corresponding *p*-values in AA and CA. Spearman *r* is reported for MMP-2 and Aortic SBP in AA only. * $p < 0.05$, ** $p < 0.001$.

production (CA: 4.01 ± 0.4 ; AA: 5.14 ± 0.36 pmol/L, $p = 0.001$) (Figure 1B) compared to CA ($n = 4$ different cell lines per race). Further, AA HUVEC exhibited an inflammatory activated gene expression profile. eNOS gene expression was not significantly different under basal ($p = 0.065$) or TNF- α ($p = 0.060$) treated conditions, while EC inflammatory activation markers (VCAM-1: basal, $p = 0.019$; TNF- α , $p \leq 0.0001$; and AA - TNF- α , $p = 0.030$, $n = 4$; and ICAM-1: basal, $p = 0.013$ and TNF- α , $p \leq 0.0001$, $n = 4$) were significantly different between race. IL-1 β gene expression was greater

in AA HUVEC under basal ($p = 0.002$), TNF- α ($p < 0.0001$), and AA - TNF- α , $p = 0.003$ conditions (Figure 2A–2D).

3.3. MMP-2 Expression and Activity

In our assessment of MMP-2 activity, gene and protein expression, MMP-2 gene expression was significantly greater in AA HUVEC ($p < 0.05$) under basal conditions and TNF- α significantly

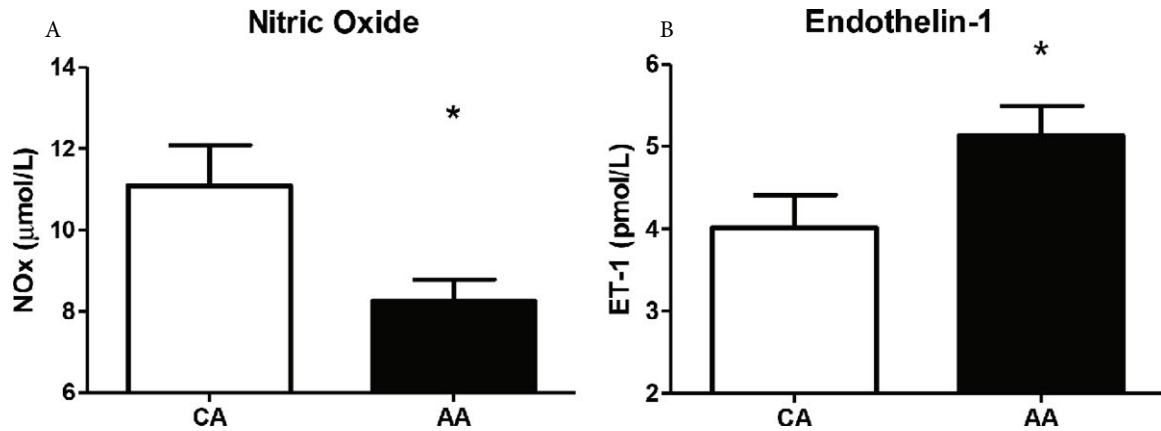


Figure 1 | The secretion of NOx and ET-1 in the basal (control) condition in AA and CA HUVEC. (A) NOx ($\mu\text{mol/L}$) in the cell culture media of AA HUVEC is lower compared to CA after 24 h. (B) ET-1 (pmol/L) secretion is greater in AA HUVEC, compared to CA, after 24 h. Data are reported as mean \pm SEM. * (A) $p < 0.05$, (B) $p = 0.001$; ($n = 4$).

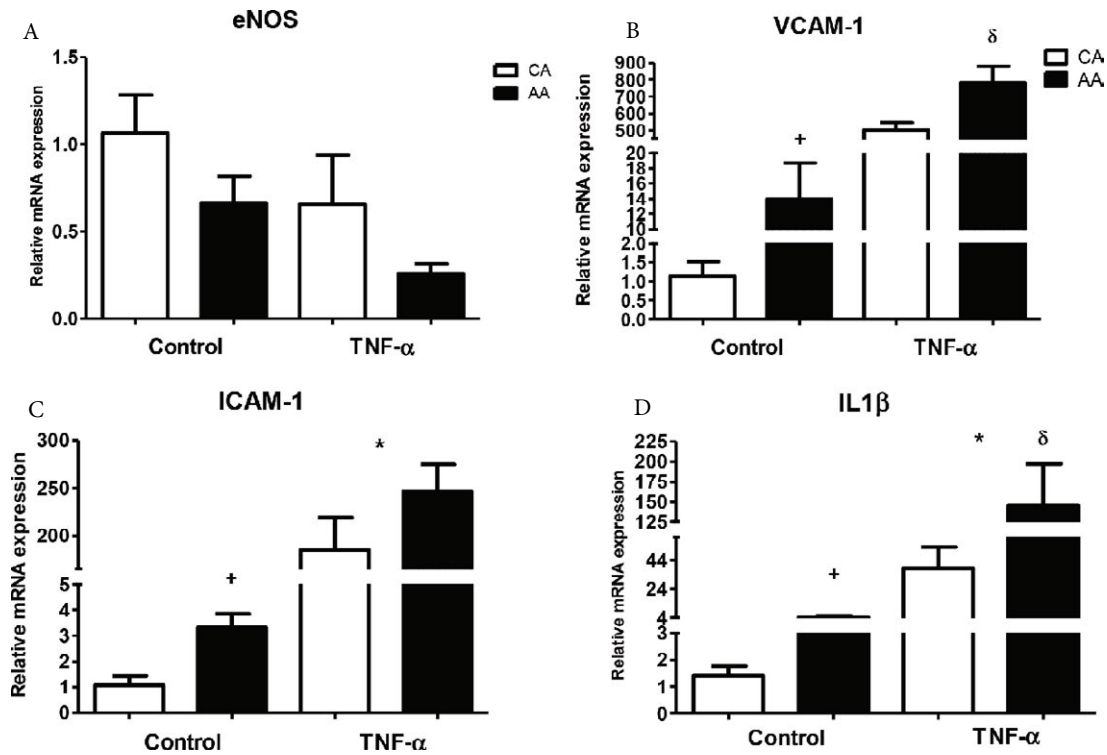


Figure 2 | Relative gene expression of eNOS, VCAM-1, ICAM-1, and IL-1 β under basal and TNF- α stimulation (10 ng/ml). After a 4 h incubation, eNOS was lower under both basal and TNF- α stimulation in AA (A). VCAM-1 was significantly higher under basal and TNF- α stimulated conditions in AA (B). ICAM-1 was significantly higher under basal and TNF- α conditions in AA (C). IL-1 β was significantly higher under basal and TNF- α stimulated conditions in AA (D). Data are reported as mean \pm SEM relative fold expression compared to control CA (white bar) referent group. + denotes significant basal racial difference, * denotes significant TNF- α effect, δ denotes significant race by TNF- α effect; duplicated, $p < 0.05$ ($n = 4$).

decreased expression in AA and CA HUVEC ($F_{3,25} = 8.32$; $p = 0.0007$) (Figure 3A). We also measured the gene expression of peptides related to MMP-2 activation. Under basal conditions, MMP-14 ($p < 0.01$) and TIMP-2 ($p < 0.05$) expression were also significantly greater in AA HUVEC (Figure 3B and 3C). Basal and TNF- α stimulated MMP-2 protein expression was slightly greater in AA, with a twofold difference (basal; CA-C: 1.83 ± 0.58 vs. AA-C: 3.68 ± 0.61) and that was sustained after TNF- α stimulation (CA-T or AA-T; $F_{3,15} = 3.256$; $p = 0.0596$) (Figure 4). Representative blots show MMP-2 band for each race and condition with corresponding α -tubulin bands.

In lieu of elevated MMP-2 gene and protein expression, we observed significantly lower basal activated MMP-2 (64 kDa) to pro-MMP-2 (72 kDa) ratio (marked as relative activity) in AA HUVEC after 4-h incubation (CA: 1.050 ± 0.2961 ; AA: 0.3008 ± 0.1559 relative units, $t_{2,23,14}$; $p = 0.041$; $n = 4$) which was still blunted after 24-h (CA: 1.101 ± 0.1913 ; AA: 0.6965 ± 0.1487 ; $n = 4$). However, MMP-2 relative activity 24-h post TNF- α stimulation was exacerbated in AA HUVEC (CA: 3.29 ± 0.23 ; AA: 6.15 ± 0.05 relative units, $p = 0.007$, $n = 4$) (Figure 5A and 5B).

4. DISCUSSION

Racial disparity studies are carried out solely *in vivo* making it difficult to understand the underlying mechanisms of EnDy that precede vascular disease(s). To the best of our knowledge, this is the first *in vivo* study to report associations between MMP-2 and vascular measures in AA and first *in vitro* study to investigate the contributions of EnDy concerning MMP-2. The main findings in our studies were, *in vivo*, MMP-2 was significantly and inversely related to stroke volume, carotid, and aortic BP in young AA men with no significant relationship in CA. *In vitro*, primary AA HUVEC exhibited basal inflammatory EnDy and differential MMP-2 expression and secreted activity as indicated by: (1) blunted basal NOx and elevated ET-1 vasoconstrictor secretion, (2) greater pro-inflammatory and MMP-2 related gene expression, and (3) greater MMP-2 protein expression with lower basal relative MMP-2 activity, compared to CA EC. These data reveal significant differential activity and responses in basal and TNF- α stimulated MMP-2 expression and activity between AA and CA HUVEC. MMP-2 is gaining recognition as therapeutic targets of endothelial and vascular dysfunction [24].

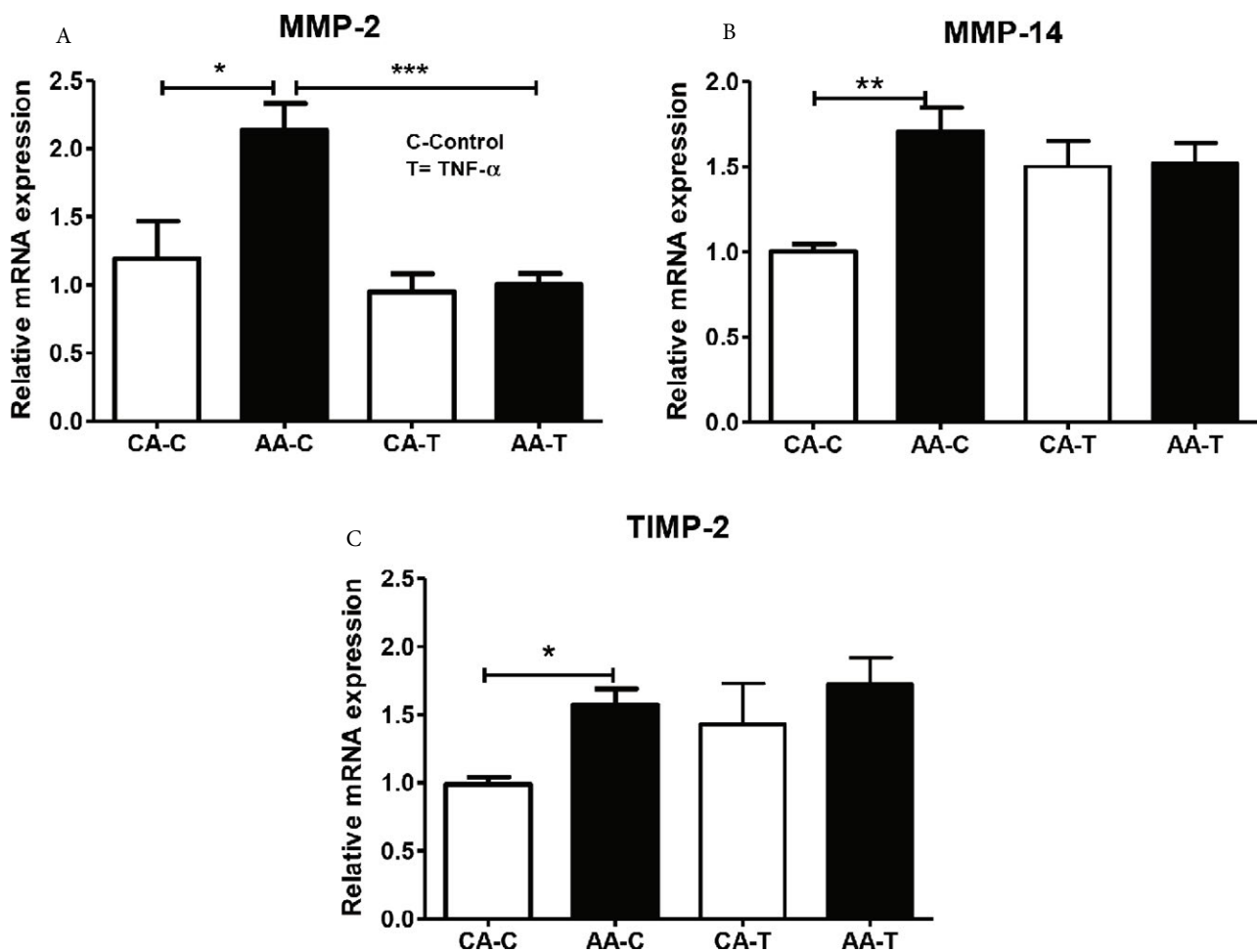


Figure 3 | Relative gene expression of (A) MMP-2, (B) MMP-14, and (C) TIMP-2 under control (-C) and TNF- α (-T) conditions. AA EC had significantly greater basal MMP-2, MMP-14, and TIMP-2 gene expression relative to CA. TNF- α reduced MMP-2 (A). Data are reported as mean \pm SEM relative fold expression compared to CA referent group. 4 h; * $p < 0.05$, ** $p < 0.01$, *** $p < 0.001$ ($n = 4$, duplicated).

The *in vitro* investigation was performed to provide insight into the contribution of MMP-2 in EC dysfunction. Utilizing multiple individual primary HUVEC, a naïve EC line, lessens the impact of pre-existing factors from humans and permits identification of EC profiles related to racial/ethnic groups. This outcome in AA HUVEC is novel considering that reduced NOx bioavailability and ET-1 have been implicated in AA hypertension [25] and the effect that heightened inflammation has on EC function [26]. Further,

MMP-2 activity is a key component of vascular Extracellular Matrix (ECM) maintenance, atherosclerosis progression, and hypertension which emphasizes its role in maintaining vascular structure and homeostasis [27,28]. Thus, differential activity of this key enzyme in AA EC underscores endothelial participation in MMP-2 activity related to vascular diseases as *in vivo* data implies [15–17,29]. These data are consistent with Kalinowski et al. [1] demonstrating that primary HUVEC from AA exhibit an EnDy profile associated with vascular dysfunction.

4.1. EnDy, Vascular Dysfunction, and Regulation of MMP-2

The association of abnormal MMP-2 activity has been more often studied in the context of vascular complications associated with cardiovascular disease, *in vivo* [30], and has been positively correlated with increased aortic intimal thickness without the presence of inflammatory cells [31]. Functionally, reduced MMP-2 secreted activity from EC may perhaps limit vascular maintenance and promote vascular dysfunction, as MMP-2 is important for ECM turnover, vascular remodeling, angiogenesis, and participates in vascular inflammatory responses [32]. Of note, aging has been associated with increased MMP-2 activity in the human aorta [33] and we observed a significant inverse relationship between MMP-2 and aortic systolic BP. In this study, the CA group is significantly older but there was no difference in MMP-2 (Table 1).

In vitro, increased gene expression of cell adhesion molecules and IL-1 β is a reflection of the heightened inflammatory state of AA EC in the basal and stimulated (TNF- α) conditions. There is evidence for the role of IL-1 β in EnDy, hypertension, and related cardiovascular diseases [34,35] as inflammation can precede the progression of hypertension and promotes MMP expression and activation in

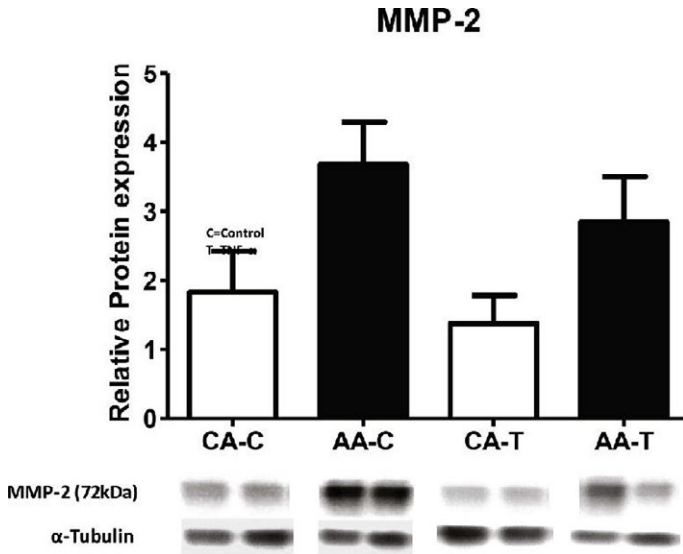


Figure 4 Relative protein expression of MMP-2 under control (-C) and TNF- α (-T). We observed slightly elevated MMP-2 protein expression in AA, compared to CA EC ($p = 0.07$). Data are reported as mean \pm SEM. Representative blots below show two adjacent lanes per group with representative α -tubulin bands; ($n = 4$).

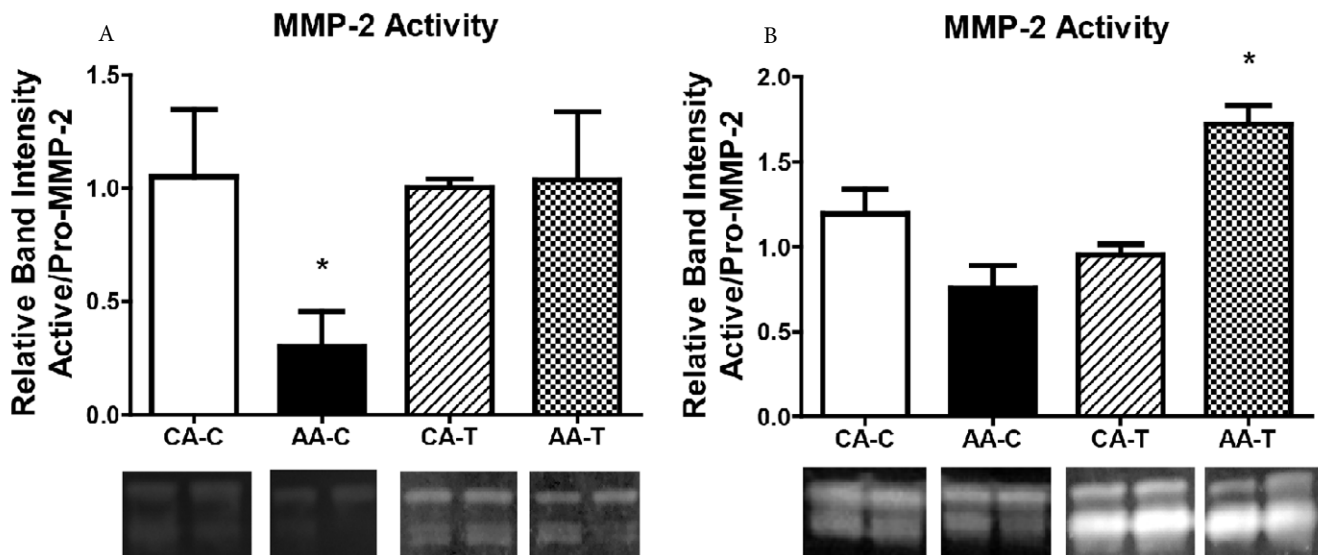


Figure 5 Relative activity of MMP-2 via zymography in AA and CA EC. (A) representation shows secreted MMP-2 activity after 4 h basal (unstimulated) and TNF- α conditions while (B) shows secreted MMP-2 activity after 24 h. Representative graphs show (A) AA HUVEC have significantly less relative MMP-2 activity after 4 h in the basal condition ($n = 4$). Relative MMP-2 activity after 24 h (B) was not different under basal condition between race, however, TNF- α stimulation exacerbated secreted MMP-2 activity in AA EC ($n = 4$). Data are reported as mean \pm SEM relative fold expression compared to control expression of CA referent group. Representative zymogram blots with two adjacent bands per group are shown; * $p < 0.05$.

vascular tissue [36]. Further, there may be intracellular interactions between pro-IL-1 β and MMP-2 proteins [19] that precede exaggerated IL-1 β activity. Clinically, anti-hypertensive agents have proven to be effective, in part, by decreasing inflammation as evidenced by significant systemic reductions of IL-1 β in essential hypertensive patients [37]. We chose not to stimulate or co-stimulate HUVEC with IL-1 β due to its capacity to directly interact with MMP-2, as noted above.

In the context of EnDy, it is equally important to outline the basal racial differences and identify responses to additional relevant inflammatory mediators. Our choice of TNF- α as an inflammatory stimulus was based on previous reports from our group showing differential and dysfunctional responses to TNF- α between AA and CA HUVEC [12]. *In vivo*, TNF- α was reported to be greater in individuals with resistant hypertension and correlated with greater pulse wave velocity (vascular dysfunction) in those patients [38]. Treating HUVEC with serum from patients with resistant hypertension while inhibiting TNF- α significantly reduced endothelial dysfunction and indirectly triggered pro-MMP-2 [39].

Inflammation and ROS have been shown to have a substantial impact on endothelial function [1], vascular health [2], and MMP-2 function regarding vascular disease [40,41]. ROS, which is nearly ubiquitous in AA EnDy, has been demonstrated to activate MMP-2 [42,43] and concomitantly inactivate TIMPs (an inhibitor of MMP-2 activation) [44] indicating a potentially damaging cascade that disrupts EC homeostasis and promotes vascular dysfunction. We did not directly measure ROS in this particular *in vitro* study, but we have previously reported higher ROS production in AA HUVEC that is characterized by significantly greater NADPH oxidase subunit expression in these cells [9]. Yoo et al. [45] has also shown that NADPH oxidase subunit Nox4-derived ROS modulates MMP-2 in oral fibroblast cells. Although these current data do not distinguish a ratio of normal to ROS-mediated MMP-2 activity, future studies are necessary to investigate this occurrence.

4.2. Regulation of MMP-2 Activity in EC

Activation of pro-MMP-2 requires TIMP-2 and MMP-14 [46]. Recently, MMP-2 and its inhibitors (e.g., TIMPs) have been significantly associated with vascular complications in left ventricular dysfunction and heart failure [47,48]. AA EC expressed significantly greater basal MMP-2, MMP-14, and TIMP-2 gene expression (Figure 3) with elevated MMP-2 protein expression (Figure 4). Although gene expression (which denotes the activation state of any cell) may not always coincide with translated protein levels, it is reasonable to expect greater MMP-14 and TIMP-2 gene expression related to the greater MMP-2 gene and consequent protein expression observed. In Figure 3, TNF- α stimulation resolved the racial difference of MMP-2 (reduction in both groups), MMP-14 (increase in CA) and TIMP 2 (slight increase in both groups). We speculate that the increase response in gene expression of MMP-14 to TNF- α is likely an inflammatory driven mechanism to control overactivity of MMP-2. Interestingly, MMP-2 protein expression was resistant to change in both groups following TNF- α stimulation but remained elevated in AA EC. The importance of MMP-2 on vascular homeostasis during inflammation appears to be an EC preserved response

and the heightened basal inflammation observed in the AA EC may be culpable for racial differences reported in the gene expression.

Secreted MMP-2 relative activity [activated (64 kDa)/pro-MMP-2 (72 kDa)] was significantly lower in AA EC. This result suggests that there is either inefficient regulation of MMP-2 activation by the trimolecular activation complex that is MMP-2/TIMP-2/MMP-14 [46] or that post-translational modification is eliciting stricter control of MMP-2 protein in AA EC. We speculate this may be another compensatory mechanism to control overactivation of MMP-2 considering greater basal inflammation. With these data, it is evident that future studies are necessary to determine the extent of MMP-2 activity coupled with TIMP-2/MMP-14 activities to determine the mechanism(s) of abnormal regulation of MMP-2 in AA EC and should include multiple EC from different vascular depots of racially diverse groups (e.g., HUAEC). Under basal conditions, blunted MMP-2 secretion in AA EC implies there could be reduced ECM maintenance and reduction in ECM sequestered growth factors [49] that are important for vascular health. Conversely, TNF- α significantly increased relative MMP-2 activity in AA but not in CA EC. This implies that the exaggerated response evident in AA EC may exacerbate activity which could accelerate vascular damage during inflammation and suggests greater sensitivity to inflammatory stimuli (TNF- α).

4.3. Limitations

Although significant, our *in vivo* data can only provide associations between MMP-2 and vascular measures with no determination on cause or overall effect. These data did prompt us to examine characteristics in naïve EC isolated from racially different groups. *In vitro* studies are essential to understanding the pathophysiological consequences of dysfunction at the cellular and mechanistic levels. However, *in vitro* studies have their limitations as noted by Ghallab [50]. We recognize that these limitations include the inability to capture interactions between multiple cell types that are present in vascular tissues (which may mediate EC responses) and titrating direct stimulation of ECs with inflammatory stimuli that would vary *in vivo*. In attempt to understand the etiology of racial differences in EnDy, this background work is necessary in understanding how to make investigating racial differences at the cellular level more physiological. The novelty of this racial comparison study is outlining the consistent differences between cells that may shape a vascular phenotype that may predispose one of a racial/ethnic background to vascular dysfunction at an earlier age. In our recent publication, we acknowledge that societal determinants and maternal lifestyle are often overlooked and may affect cellular programming that impact EC pathophenotype and CVD risk [51]. Further, future studies must consider thorough characterization of EC donors and utilize epigenetic profiling (*in vitro*) and metabolomic approaches (*in vivo*) to aid in making any associations concrete.

Importantly, it has been shown that basal and inflammatory responses are comparable between cultured primary isolated HUVEC, Human Umbilical Arterial Endothelial Cells (HUAEC), and primary Human Coronary Artery Endothelial Cells (HCAEC) [52]. Unfortunately, primary HUAEC and HCAEC isolated from specific racial/ethnic groups are not currently available. Future studies must also include ECs from various vascular depots where

cells have been least likely influenced by disease states, which is a fitting rationale for the use of isolated umbilical cord ECs.

5. CONCLUSION

The inverse relationships between MMP-2 and vascular measures prompted investigation into racial differences at the cellular level. The heightened activation of primary EC from AA and expression of MMP-2 was significantly greater in AA EC but did not correspond with secreted activity. Further, MMP-2 secreted activity in AA EC was lower under basal conditions (mirroring *in vivo* results from our previous study in young AA men) while exhibited an exacerbated response to TNF- α , compared to CA EC. These data add new insight into basal EC dysregulation of a protein related to overall vascular health. Further, these data underscore the differential activities of MMP-2 in AA EC that necessitate additional *in vitro* and *in vivo* studies to determine epigenetic and post-translational modification of MMP-2 to clearly define its role within the context of racial differences in EnDy (e.g., greater inflammation and oxidative stress), vascular maintenance, and BP regulation.

CONFLICTS OF INTEREST

The authors declare they have no conflicts of interest.

AUTHORS' CONTRIBUTION

MDC and MB contributed in conception and design. MDC, CL, HG and KH contributed in experimental execution (*in vivo* data). MDC, CL, AA, MA, MB and BF contributed in analysis and interpretation of data (*in vivo* data). MDC contributed in writing. All authors contributed in review and revision.

ABBREVIATIONS

AA, African American; CA, Caucasian; EC, endothelial cell; EnDy, endothelial dysfunction; eNOS, endothelial nitric oxide synthase; ET-1, endothelin-1; ECM, extracellular matrix; HUVEC, human umbilical vein endothelial cells; ICAM-1, intracellular adhesion molecule-1; IL-1 β , interleukin-1 β ; MMP-2, matrix metalloproteinase 2; MMP-14, matrix metalloproteinase 14; NADPH, nicotinamide adenine dinucleotide phosphate; NOx, nitric oxide; ROS, reactive oxygen species; TIMP, tissue inhibitor of metalloproteinase; TNF- α , tumor necrosis factor-alpha; VCAM-1, vascular cell adhesion molecule.

FUNDING

This work was partially funded by the American Heart Association Career Development Award to Marc Cook (18CDA34110444).

REFERENCES

- [1] Kalinowski L, Dobrucki IT, Malinski T. Race-specific differences in endothelial function: predisposition of African Americans to vascular diseases. *Circulation* 2004;109:2511–17.
- [2] Hozawa A, Folsom AR, Sharrett AR, Chambless LE. Absolute and attributable risks of cardiovascular disease incidence in relation to optimal and borderline risk factors: comparison of African American with white subjects—Atherosclerosis Risk in Communities Study. *Arch Intern Med* 2007;167:573–9.
- [3] Carnethon MR, Pu J, Howard G, Albert MA, Anderson CAM, Bertoni AG, et al. Cardiovascular health in African Americans: a scientific statement from the American Heart Association. *Circulation* 2017;136:e393–e423.
- [4] Go AS, Mozaffarian D, Roger VL, Benjamin EJ, Berry JD, Blaha MJ, et al. Heart disease and stroke statistics—2014 update: a report from the American Heart Association. *Circulation* 2014;129:e28–e292.
- [5] Ferdinand KC, Armani A. Cardiovascular disease in racial and ethnic minorities. New York: Humana Press; Springer Science & Business Media; 2010.
- [6] Ferdinand KC, Armani AM. The management of hypertension in African Americans. *Crit Pathw Cardiol* 2007;6:67–71.
- [7] Patel PD, Velazquez JL, Arora RR. Endothelial dysfunction in African-Americans. *Int J Cardiol* 2009;132:157–72.
- [8] Veerabhadrapa P, Diaz KM, Fearheller DL, Sturgeon KM, Williamson ST, Crabbe DL, et al. Endothelial-dependent flow-mediated dilation in African Americans with masked-hypertension. *Am J Hypertens* 2011;24:1102–7.
- [9] Fearheller DL, Park JY, Sturgeon KM, Williamson ST, Diaz KM, Veerabhadrapa P, et al. Racial differences in oxidative stress and inflammation: *in vitro* and *in vivo*. *Clin Transl Sci* 2011;4:32–7.
- [10] Cook MD, Heffernan KS, Ranadive S, Woods JA, Fernhall B. Effect of resistance training on biomarkers of vascular function and oxidative stress in young African-American and Caucasian men. *J Hum Hypertens* 2013;27:388–92.
- [11] Babbitt DM, Diaz KM, Fearheller DL, Sturgeon KM, Perkins AM, Veerabhadrapa P, et al. Endothelial activation microparticles and inflammation status improve with exercise training in African Americans. *Int J Hypertens* 2013;2013:538017.
- [12] Brown MD, Fearheller DL, Thakkar S, Veerabhadrapa P, Park JY. Racial differences in tumor necrosis factor-alpha-induced endothelial microparticles and interleukin-6 production. *Vasc Health Risk Manag* 2011;7:541–50.
- [13] Brown MD, Fearheller DL. Are there race-dependent endothelial cell responses to exercise? *Exerc Sport Sci Rev* 2013;41:44–54.
- [14] Fearheller DL, Park JY, Rizzo V, Kim B, Brown MD. Racial differences in the responses to shear stress in human umbilical vein endothelial cells. *Vasc Health Risk Manag* 2011;7:425–31.
- [15] Yasmin, McEniery CM, Wallace S, Dakham Z, Pulsalkar P, Maki-Petaja K, et al. Matrix metalloproteinase-9 (MMP-9), MMP-2, and serum elastase activity are associated with systolic hypertension and arterial stiffness. *Arterioscler Thromb Vasc Biol* 2005;25:372–8.
- [16] Friese RS, Rao F, Khandrika S, Thomas B, Ziegler MG, Schmid-Schönbein GW, et al. Matrix metalloproteinases: discrete elevations in essential hypertension and hypertensive end-stage renal disease. *Clin Exp Hypertens* 2009;31:521–33.
- [17] Coutinho T, Turner ST, Mosley TH, Kullo IJ. Biomarkers associated with pulse pressure in African-Americans and non-Hispanic whites. *Am J Hypertens* 2012;25:145–51.
- [18] Chen Q, Jin M, Yang F, Zhu J, Xiao Q, Zhang L. Matrix metalloproteinases: inflammatory regulators of cell behaviors in vascular formation and remodeling. *Mediators Inflamm* 2013;2013:928315.

- [19] Schönbeck U, Mach F, Libby P. Generation of biologically active IL-1 beta by matrix metalloproteinases: a novel caspase-1-independent pathway of IL-1 beta processing. *J Immunol* 1998;161:3340–6.
- [20] Heffernan KS, Jae SY, Wilund KR, Woods JA, Fernhall B. Racial differences in central blood pressure and vascular function in young men. *Am J Physiol Heart Circ Physiol* 2008;295:H2380–H7.
- [21] Ben-Yosef Y, Miller A, Shapiro S, Lahat N. Hypoxia of endothelial cells leads to MMP-2-dependent survival and death. *Am J Physiol Cell Physiol* 2005;289:C1321–C31.
- [22] Livak KJ, Schmittgen TD. Analysis of relative gene expression data using real-time quantitative PCR and the 2^{(-Delta Delta C(T))} Method. *Methods* 2001;25:402–8.
- [23] Bryan NS, Grisham MB. Methods to detect nitric oxide and its metabolites in biological samples. *Free Radic Biol Med* 2007;43:645–57.
- [24] de Franciscis S, Serra R. Matrix metalloproteinases and endothelial dysfunction: the search for new prognostic markers and for new therapeutic targets for vascular wall imbalance. *Thromb Res* 2015;136:5–6.
- [25] Ergul S, Parish DC, Puett D, Ergul A. Racial differences in plasma endothelin-1 concentrations in individuals with essential hypertension. *Hypertension* 1996;28:652–5.
- [26] Cook MD. Endothelial cell function and hypertension: interactions among inflammation, immune function, and exercise. In: Pescatello LS, editor. *Effects of exercise on hypertension: from cells to physiological systems*. New York: Humana Press; Springer; 2015, pp. 301–23.
- [27] Galis ZS, Khatri JJ. Matrix metalloproteinases in vascular remodeling and atherogenesis: the good, the bad, and the ugly. *Circ Res* 2002;90:251–62.
- [28] Raffetto JD, Khalil RA. Matrix metalloproteinases and their inhibitors in vascular remodeling and vascular disease. *Biochem Pharmacol* 2008;75:346–59.
- [29] Coutinho T, Al-Omari M, Mosley Jr TH, Kullo IJ. Biomarkers of left ventricular hypertrophy and remodeling in blacks. *Hypertension* 2011;58:920–5.
- [30] Papazafiropoulou A, Tentolouris N. Matrix metalloproteinases and cardiovascular diseases. *Hippokratia* 2009;13:76–82.
- [31] Wang M, Takagi G, Asai K, Resuello RG, Natividad FF, Vatner DE, et al. Aging increases aortic MMP-2 activity and angiotensin II in nonhuman primates. *Hypertension* 2003;41:1308–16.
- [32] Hopps E, Lo Presti R, Caimi G. Matrix metalloproteinases in arterial hypertension and their trend after antihypertensive treatment. *Kidney Blood Press Res* 2017;42:347–57.
- [33] McNulty M, Spiers P, McGovern E, Feely J. Aging is associated with increased matrix metalloproteinase-2 activity in the human aorta. *Am J Hypertens* 2005;18:504–9.
- [34] Mauno V, Hannu K, Esko K. Proinflammation and hypertension: a population-based study. *Mediators Inflamm* 2008;2008:619704.
- [35] Dalekos GN, Elisaf M, Bairaktari E, Tsolas O, Siamopoulos KC. Increased serum levels of interleukin-1beta in the systemic circulation of patients with essential hypertension: additional risk factor for atherogenesis in hypertensive patients? *J Lab Clin Med* 1997;129:300–8.
- [36] Libby P. Inflammation and cardiovascular disease mechanisms. *Am J Clin Nutr* 2006;83:456S–60S.
- [37] Nemati F, Rahbar-Roshandel N, Hosseini F, Mahmoudian M, Shafiei M. Anti-inflammatory effects of anti-hypertensive agents: influence on interleukin-1beta secretion by peripheral blood polymorphonuclear leukocytes from patients with essential hypertension. *Clin Exp Hypertens* 2011;33:66–76.
- [38] Barbaro NR, de Araújo TM, Tanus-Santos JE, Anhe GF, Fontana V, Moreno H. Vascular damage in resistant hypertension: TNF-alpha inhibition effects on endothelial cells. *Biomed Res Int* 2015;2015:631594.
- [39] Han YP, Tuan TL, Wu H, Hughes M, Garner WL. TNF-alpha stimulates activation of pro-MMP2 in human skin through NF-(kappa)B mediated induction of MT1-MMP. *J Cell Sci* 2001;114:131–9.
- [40] Mountain DJH, Singh M, Menon B, Singh K. Interleukin-1beta increases expression and activity of matrix metalloproteinase-2 in cardiac microvascular endothelial cells: role of PKCalpha/beta1 and MAPKs. *Am J Physiol Cell Physiol* 2007;292:C867–C75.
- [41] Vacek TP, Rehman S, Neamtu D, Yu S, Givimani S, Tyagi SC. Matrix metalloproteinases in atherosclerosis: role of nitric oxide, hydrogen sulfide, homocysteine, and polymorphisms. *Vasc Health Risk Manag* 2015;11:173–83.
- [42] Okamoto T, Akaike T, Sawa T, Miyamoto Y, van der Vliet A, Maeda H. Activation of matrix metalloproteinases by peroxynitrite-induced protein S-glutathiolation via disulfide S-oxide formation. *J Biol Chem* 2001;276:29596–602.
- [43] Viappiani S, Nicolescu AC, Holt A, Sawicki G, Crawford BD, León H, et al. Activation and modulation of 72 kDa matrix metalloproteinase-2 by peroxynitrite and glutathione. *Biochem Pharmacol* 2009;77:826–34.
- [44] Donnini S, Monti M, Roncone R, Morbidelli L, Rocchigiani M, Oliviero S, et al. Peroxynitrite inactivates human-tissue inhibitor of metalloproteinase-4. *FEBS Lett* 2008;582:1135–40.
- [45] Yoo T, Ham SA, Hwang JS, Lee WJ, Paek KS, Oh JW, et al. Peroxisome proliferator-activated receptor delta inhibits *Porphyromonas gingivalis* lipopolysaccharide-induced activation of matrix metalloproteinase-2 by downregulating NADPH oxidase 4 in human gingival fibroblasts. *Mol Oral Microbiol* 2016;31:398–409.
- [46] Wang Z, Juttermann R, Soloway PD. TIMP-2 is required for efficient activation of proMMP-2 *in vivo*. *J Biol Chem* 2000;275:26411–15.
- [47] Givimani S, Kundu S, Narayanan N, Armaghan F, Qipshidze N, Pushpakumar S, et al. TIMP-2 mutant decreases MMP-2 activity and augments pressure overload induced LV dysfunction and heart failure. *Arch Physiol Biochem* 2013;119:65–74.
- [48] Nilsson L, Hallén J, Atar D, Jonasson L, Swahn E. Early measurements of plasma matrix metalloproteinase-2 predict infarct size and ventricular dysfunction in ST-elevation myocardial infarction. *Heart* 2012;98:31–6.
- [49] Page-McCaw A, Ewald AJ, Werb Z. Matrix metalloproteinases and the regulation of tissue remodeling. *Nat Rev Mol Cell Biol* 2007;8:221–33.
- [50] Ghallab A. *In vitro* test systems and their limitations. *EXCLI J* 2013;12:1024–6.
- [51] Robinson AT, Cook MD, Lane-Cordova AD. Making cell culture more physiological: a call for a more comprehensive assessment of racial disparities in endothelial cell culture studies. *Am J Physiol Cell Physiol* 2020;318:C238–C41.
- [52] Thin Luu N, Rahman M, Stone PC, Ed Rainger G, Nash GB. Responses of endothelial cells from different vessels to inflammatory cytokines and shear stress: evidence for the pliability of endothelial phenotype. *J Vasc Res* 2010;47:451–61.